

SOMI

Center

Medical Office Space

5966 South Dixie Highway
Miami, FL 33143



Owned & Managed by

 **ShareMD**

Leasing

 **BLANCA**

BUILDING FACTS



Address

5966 S. Dixie Hwy.,
Miami, FL 33143



Features

- High Ceilings
- Abundant Natural Light
- 24-Hour Access
- Spec Suites Underway



Lobby
Virtual Tour

Size

52,464 Rentable
Square Feet

Parking Ratio

4 spaces per 1,000
square feet leased



Ownership

Owned and operated
by ShareMD

A private equity-backed
healthcare services
company

THE BUILDING



MOVE-IN READY SPEC SUITE



Spec Suite 409 - 2,535 RSF



Click Here for Virtual Tour

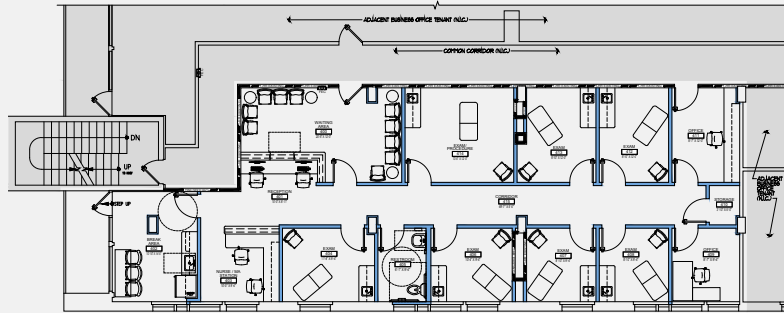
Move-In Ready Medical Suite

Flexible layouts and Customizable Floor Plans

Ample Parking and Patient-Friendly Access

On-Site Property Management

Close Proximity to Hospitals & Healthcare Networks



- State-of-the-art
examination and
treatment rooms

- Established medical
tenants within the
building

Class A

Medical Office Building



LOCATION

Located at the crossroads of South Miami and Coral Gables, SOMI Center offers unmatched visibility facing US-1 and access to the walkable South Miami District. With its prime location near Baptist Health's: South Miami and Kendall Main Hospitals. Just minutes from Downtown Coral Gables, Coconut Grove and Pinecrest.

SOMI Center brings together advanced medical technology, experienced healthcare professionals, and a patient-focused approach. From preventive care and routine checkups to specialized service practices, we are committed to providing high-quality medical office spaces in one convenient location.

93
Walk Score®
"Walker's Paradise"

- Convenient South Miami location
- 3 minute walk to South Miami Metrorail Station



NEARBY HOSPITALS



Above
Larkin Community
Hospital - 1.2 miles

🚗 4 MIN DRIVE

Below
South Miami Hospital

🚗 00 MIN DRIVE



Right
Baptist Health Doctors
Hospital - 2.9 miles

🚗 10 MIN DRIVE

Below
Keralty Hospital - 5.6 miles

🚗 13 MIN DRIVE



Left
Baptist Health
Hospital - 0.3 miles

🚗 2 MIN DRIVE

Right
Kindred Hospital - 5.5 miles

🚗 19 MIN DRIVE



WHAT'S AROUND



Left
Dadeland Mall -
1.5 miles
🚗 6 MIN DRIVE

Right
Whole Foods Market -
1.1 miles
🚗 6 MIN DRIVE



Above
Dadeland Station -
1.1 miles
🚗 6 MIN DRIVE



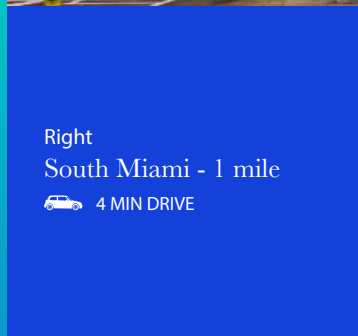
Right
On-Site Food & Beverage:
- 107 Taste
- Pura Vida
- The Salty
- Oak Berry
- Skinny Louie



NEARBY NEIGHBORHOODS



Left
Brickell - 8 miles
🚗 28 MIN DRIVE



Right
South Miami - 1 mile
🚗 4 MIN DRIVE



Left
Coral Gables - 5.3 miles
🚗 17 MIN DRIVE

Right
Doral - 11.5 miles
🚗 20 MIN DRIVE



Above
Kendall - 6.3 miles
🚗 13 MIN DRIVE

Left
Coconut Grove - 4.7 miles
🚗 17 MIN DRIVE



SOMI Center

**For Leasing Information,
please contact:**

ANDES DEL CORRAL

ANDRESDELCORRAL@BLANCACRE.COM

305.577.0271

MILES GLASCOCK, MCR

MILES.GLASCOCK@BLANCACRE.COM

305.205.7435



BLANCA COMMERCIAL REAL ESTATE, INC.

LICENSED REAL ESTATE BROKER | WWW.BLANCACRE.COM

No warranty of representation, expressed or implied, is made as to the accuracy of the information contained herein, and same is submitted subject to errors, omissions, change of price rental or other conditions, withdrawal without notice, and to any special conditions imposed by our clients.